

# SPEC SHEET + MEASUREMENTS



## Eddie Bauer® Dash Full-Zip Fleece Jacket. EB242

### Product photo



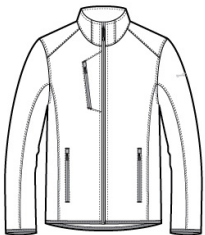
Combining textured and smooth-faced fleece for a dynamic look and unbeatable comfort, this full-zip also has superior mobility.

- Textured 9.7-ounce, 100% polyester knit bonded to 100% polyester brushed-back fleece
- Anti-pill finish inside
- Reverse coil zippers
- Front zippered pockets
- Stretch binding at cuffs and hem
- Contrast heat transfer Eddie Bauer logo on left sleeve

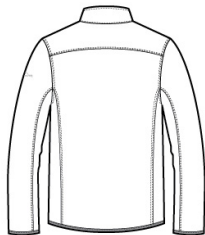
### CARE INSTRUCTIONS

Machine wash cold with like colors, only non-chlorine bleach when needed, tumble dry low, warm iron if necessary.

### Sketches



front



back

# SPEC SHEET + MEASUREMENTS



Eddie Bauer® Dash Full-Zip Fleece Jacket. EB242

## PRODUCT MEASUREMENTS

	XS	S	M	L	XL	2XL	3XL	4XL
Chest	19 1/2	21	22 1/2	24	25 1/2	27	29	31
Body Length at Back	27 1/2	28 1/2	29 1/2	30 1/2	31 1/2	32 1/2	33	33 1/2
Sleeve Length from Center Back	34 3/4	35 1/2	36 1/4	37	37 3/4	38 1/2	39 1/4	40

**Chest:** Measured across the chest one inch below armhole when laid flat.

**Body Length at Back:** Measured from high point shoulder to finished hem at back.

**Sleeve Length from Center Back:** Measure from Center Back neck to shoulder point to sleeve hem.

## SIZE CHARTS

	XS	S	M	L	XL	2XL	3XL	4XL
Chest	32-34	35-37	38-40	41-43	44-46	48-50	52-54	55-57

# SPEC SHEET + MEASUREMENTS



Eddie Bauer® Dash Full-Zip Fleece Jacket. EB242

## HOW TO MEASURE

---



### CHEST

Measure under the arm and around the fullest part of the chest with arms down, keeping tape horizontal.

## COLORS

---



Black  
PMS BLACK  
C



Cobalt Blue  
PMS 654C



Grey Steel  
PMS 7540C



River Blue  
Navy  
PMS 533C